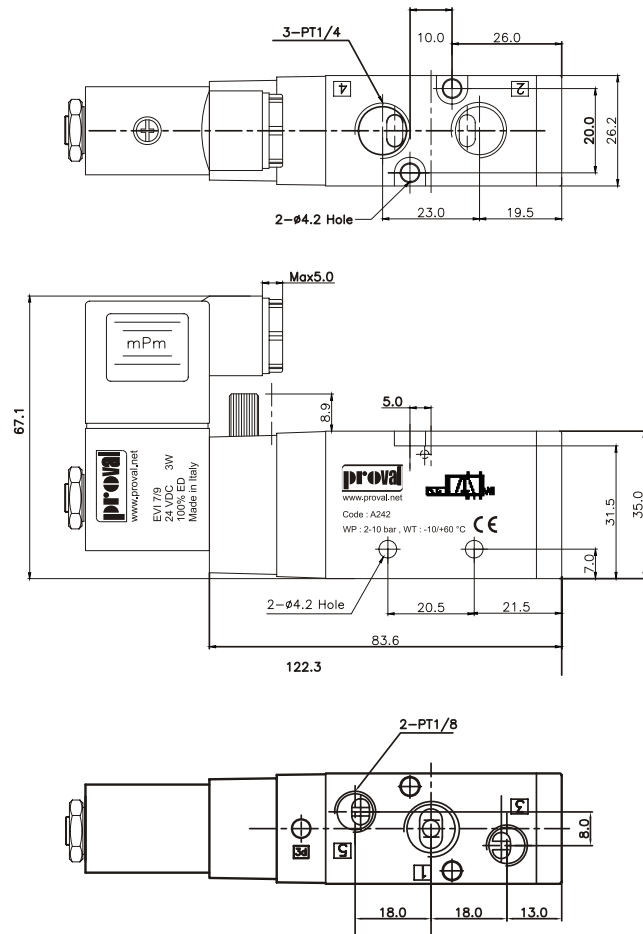


A241 (3/2) / A242 (5/2) Type Solenoid Valves

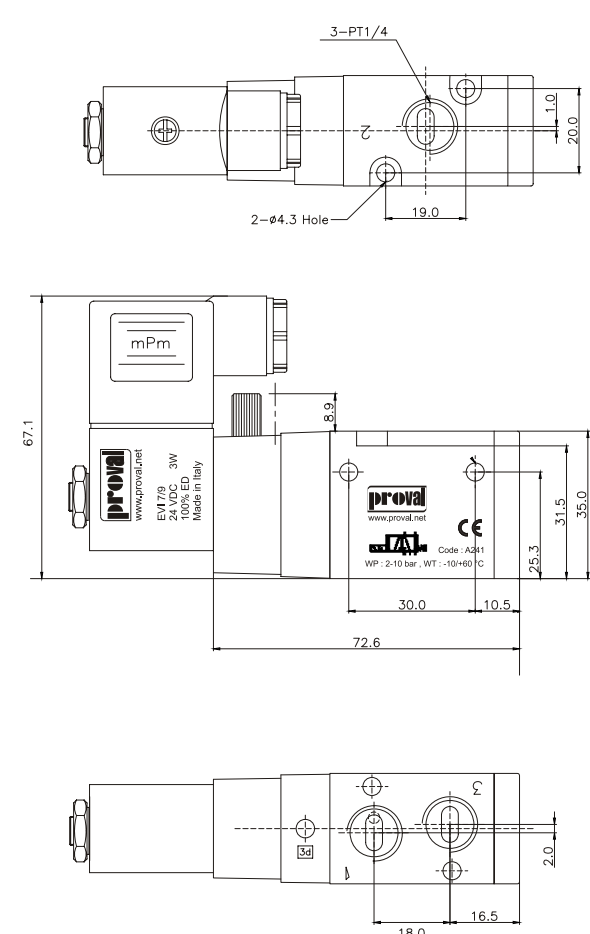
Proval A241 and A242 Series air solenoid valves can be used single or assembled on a rack from 2 to 10 pcs.



A242 (5/2) Type Solenoid Valves



A241 (3/2) Type Solenoid Valves



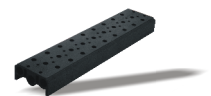
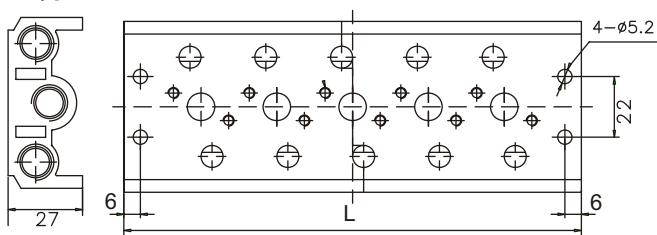
Material List

Part Name	Material
Body	Hard Anodised Aluminum Extrusion
Piston	Aluminum Extrusion
Screw	AISI316 Stainless Steel
Spring	AISI316 Stainless Steel
Seal	NBR

Technical Specifications

Power Supply	12 VDC	24 VDC	24 VAC	110 VAC	220 VAC
Power Consumption	3W	3W	5VA	5VA	5VA
Air Supply	G 1/4"				
Working Pressure	2 - 10 bar				
Protection Class	IP65 (Optional Eex m II T5 ATEX)				
Working Temperature	-10 °C ~ + 70 °C				
Flow Capacity	720 Lt/min				

5/2 Type Valve Rack



Nr. of Valves	2	3	4	5	6
L (mm)	56	84	111	139	166
Nr. of Valves	7	8	9	10	
L (mm)	194	211	249	276	