



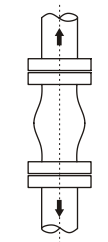
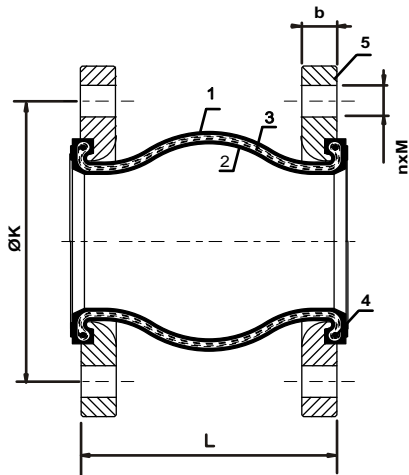
K100 Rubber Expansion Joints

Rubber expansion joints are used in pipelines to,

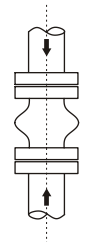
- * Absorb mechanical vibrations caused by machines and pumps
- * Reduce sound transmission caused by pumping fluids in pipe lines
- * Reduce stress compensating for axial, lateral and angular movements caused by contraction and expansion of pipe lengths due to thermal changes



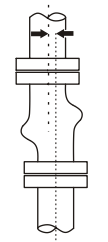
Movements,



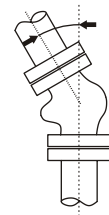
Axial Elongation



Axial Compression



Lateral Movement



Angular Movement

Material List

| No | Part Name | Material |
|----|---------------|---------------------------------|
| 1 | Inner Lining | EPDM or NBR |
| 2 | Outer Lining | GGG40, AISI304, AISI316, Bronze |
| 3 | Middle Lining | Nylon Cord Fabric |
| 4 | Wire | Hardened Steel |
| 5 | Flange | St37 or Stainless Steel |

Dimensions (mm)

| Size (DN) | Pressure Class | L (mm) | K (mm) | b (mm) | n (Qty) | Bolt Diameter (mm) | Max Allowable Movement | | | |
|-----------|----------------|--------|--------|--------|---------|--------------------|------------------------|------------------------|-----------------------|------------------|
| | | | | | | | Axial Elongation (mm) | Axial Compression (mm) | Lateral Movement (mm) | Angular Movement |
| 32 | PN10/16 | 95 | 100 | 16 | 4 | 16 | 6 | 9 | 9 | 15° |
| 40 | PN10/16 | 95 | 110 | 18 | 4 | 16 | 6 | 10 | 9 | 15° |
| 50 | PN10/16 | 105 | 125 | 18 | 4 | 16 | 7 | 10 | 10 | 15° |
| 65 | PN10/16 | 115 | 145 | 20 | 8 | 16 | 7 | 13 | 11 | 15° |
| 80 | PN10/16 | 135 | 160 | 20 | 8 | 16 | 8 | 15 | 12 | 15° |
| 100 | PN10/16 | 150 | 180 | 22 | 8 | 16 | 10 | 19 | 13 | 15° |
| 125 | PN10/16 | 165 | 210 | 24 | 8 | 16 | 12 | 19 | 13 | 15° |
| 150 | PN10/16 | 180 | 240 | 24 | 8 | 20 | 12 | 20 | 14 | 15° |
| 200 | PN10/16 | 210 | 295 | 24 | 8 | 20 | 16 | 25 | 22 | 15° |
| 250 | PN10 | 230 | 350 | 28 | 12 | 20 | 16 | 25 | 22 | 15° |
| | PN16 | | 355 | 28 | 12 | 24 | | | | |
| 300 | PN10 | 245 | 400 | 28 | 12 | 20 | 16 | 25 | 22 | 15° |
| | PN16 | | 410 | 30 | 12 | 24 | | | | |
| 350 | PN10 | 255 | 460 | 28 | 12 | 20 | 16 | 25 | 22 | 15° |
| | PN16 | | | 32 | 12 | 24 | | | | |
| 400 | PN10 | 255 | 515 | 30 | 12 | 24 | 16 | 25 | 22 | 15° |
| | PN16 | | | 34 | 12 | 27 | | | | |
| 450 | PN10 | 255 | 565 | 30 | 16 | 24 | 16 | 25 | 22 | 15° |
| | PN16 | | | 32 | 16 | 27 | | | | |
| 500 | PN10 | 255 | 620 | 32 | 16 | 24 | 16 | 25 | 22 | 15° |
| | PN16 | | | 36 | 16 | 30 | | | | |
| 600 | PN10 | 255 | 725 | 36 | 16 | 27 | 16 | 25 | 22 | 15° |
| | PN16 | | | 44 | 16 | 33 | | | | |