

V800 Threaded / Flanged End Pinch Valves

Proval pneumatic pinch valves are widely used in mining industries in high mechanical abbrasive applications, slurries and other industrial applications.

Proval V800 pinch valve sleeves can be replaced easily. Pneumatic pinch valves are to be operated by a 3/2 way solenoid valve.

Main application areas ;

Mining , Metallurgy , chemical , water treatment and other general industrial applications.

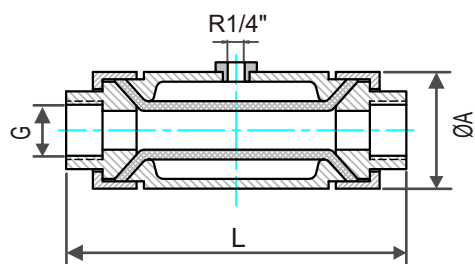
In order to ensure 100% tightness, pipe line presure must be min. Δp 1,5 bar lower than air supply pressure.



Flanged End Pinch Valve

Threaded End Pinch Valves (1/2" - 2")

Available Body Materials : Carbon Steel / Stainless Steel



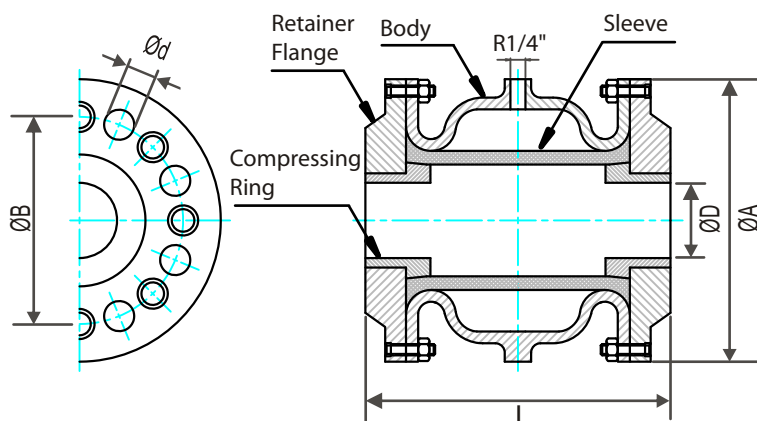
Threaded End Pinch Valve

Dimensions (mm)

| Size (DN) | G | L | ØA |
|-----------|--------|-----|-----|
| 15 | 1/2" | 135 | 60 |
| 20 | 3/4" | 142 | 60 |
| 25 | 1" | 145 | 75 |
| 32 | 1-1/4" | 170 | 90 |
| 40 | 1-1/2" | 200 | 110 |
| 50 | 2" | 220 | 120 |

Flanged End Pinch Valves (DN40-DN250)

Available Body Materials : Alu Casting / Ductile Iron



Flanged End Pinch Valve

Dimensions (mm)

| DN | ØD | L | ØA | ØB | Ød | n |
|-----|-----|-----|-----|-----|----|----|
| 40 | 40 | 155 | 150 | 110 | 18 | 4 |
| 50 | 60 | 166 | 165 | 125 | 18 | 4 |
| 65 | 60 | 183 | 185 | 145 | 18 | 4 |
| 80 | 75 | 220 | 200 | 160 | 18 | 8 |
| 100 | 100 | 280 | 220 | 180 | 18 | 8 |
| 125 | 120 | 348 | 250 | 210 | 18 | 8 |
| 150 | 145 | 418 | 285 | 240 | 22 | 8 |
| 200 | 190 | 555 | 340 | 295 | 22 | 8 |
| 250 | 250 | 610 | 390 | 350 | 22 | 12 |